







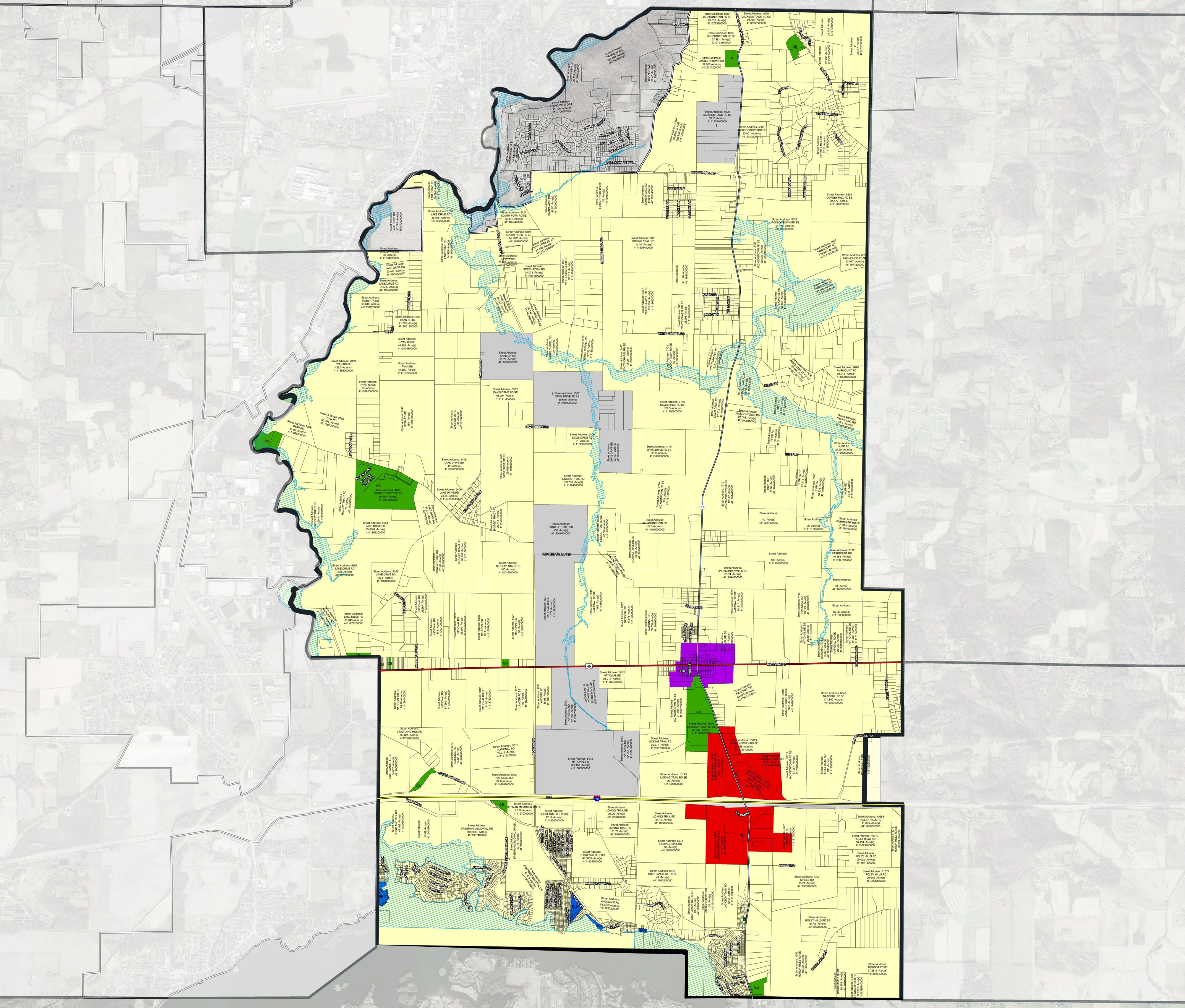


LICKING TOWNSHIP
 OFFICIAL ZONING MAP
 LICKING TOWNSHIP, OHIO

-  Floodplain
-  Townships
- Zoning District
 -  R, Residential District
 -  I, Industrial and Manufacturing District
 -  IB, Interstate Business District
 -  BLB, Buckeye Lake Business District
 -  JB, Jacksonville Business District
 -  GB, General Business District



ADOPTED DATE: 11-18-2013
 EFFECTIVE DATE: 12-18-2013
 Trustee Joseph D. Hest Date 4-7-14
 Trustee Paul Hill Date 4-7-14
 Trustee Dawn Miller Date 4-7-14
 Witness By Andrew J. Spach Date 4/7/14
 Fiscal Officer

0 1,200 Feet
 Sources: Licking County Engineer, 0114
 Zoning District, Township Resolution
 The information and features on this map have been compiled by Licking County staff from a variety of sources, and are subject to change without notice. Licking County makes no representations or warranties, expressed or implied, as to accuracy, completeness, timeliness, or rights to the use of such information.